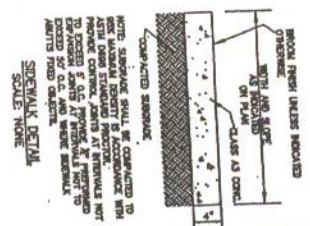
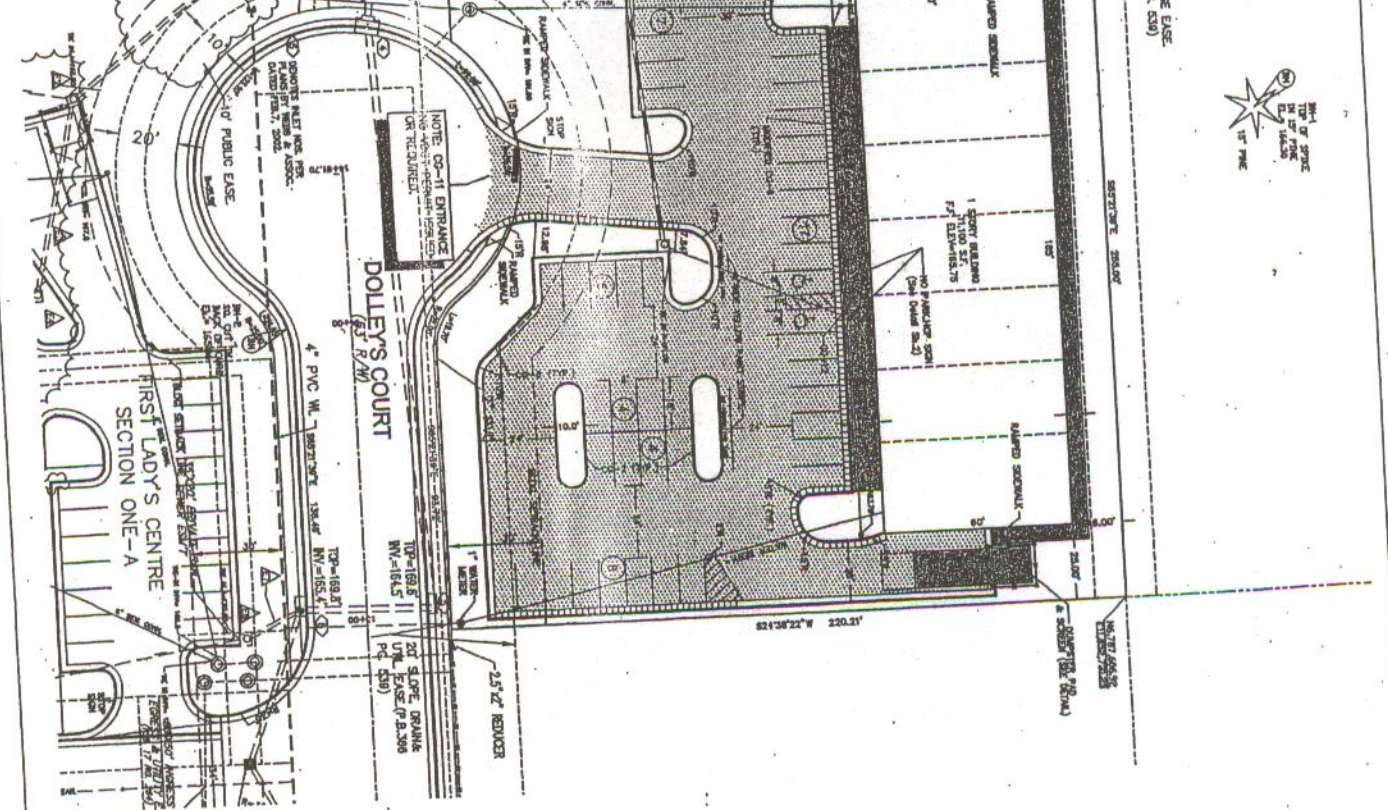
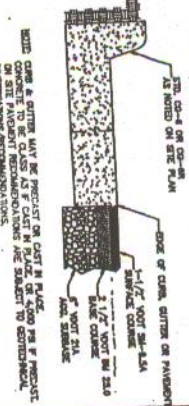


23-66
RIVER INVESTMENT
30 LPO
1987
REAR YARD
REAR YARD

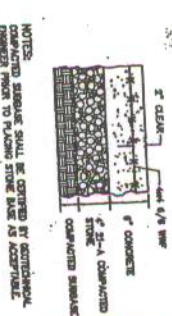
1-FLUSHING HYDRANT
BLOWOFF ASSEMBLY
MEGALUG 60" FROM F.H.
NOTE: ENVIRONMENT ONE
MODEL OR 2015 (1 1/2")
PLANS BY 2000
PLANS BY 2000
PLANS BY 2000
CONNECTION TO F.H. ETC.
BY OTHERS)



ENTRANCE & PARKING LOT SECTION



CONCRETE PAD DETAIL



- SITE LEGEND**
- PROPOSED ASPHALT (SEE SPEC. SHEET)
 - CONCRETE (See Note 1)
 - CONCRETE (See Note 1)
 - CONCRETE (See Note 1)

<p>FIRST LADY'S RETAIL II Rappahannock District King George County, Virginia</p>		<p>FRANK F. POTTS, JR., PLLC ENGINEERING, SURVEYING AND PLANNING</p>		<p>DATE: APRIL 2008 SCALE: 1"=20'</p>		<p>DESIGNED: TFP, J. DRAWN: DFP CHECKED: MPP, J.</p>			
<p>LAYOUT & UTILITY PLAN</p>									